



AMERICAN STAINLESS PUMPS
STAINLESS STEEL PUMPS FOR THE COMMERCIAL MARKETPLACE

PRODUCT CATALOG



WWW.ASPUMPS.COM



AMERICAN STAINLESS PUMPS



The Toughest Stamped Stainless Pumps on the Market!

- American made products at a competitive price.
- Nozzles & fittings can be customized for Original Equipment Manufacturers.
- Quick leadtimes for stock or custom products.
- Pumps built to order per customer specifications.

Multiple Motor Options Available

- ODP, TEFC, Washdown Duty, Explosion Proof
- All Stainless Steel motors available
- Single or Three Phase
- 50/60 Hz
- 575V
- 1750, 3500rpm

Features

- Open and Enclosed Impellers
- Close Coupled Pumps
- Back pullout pump design for easy access.... no piping removal
- All Stainless Steel Wetted Parts

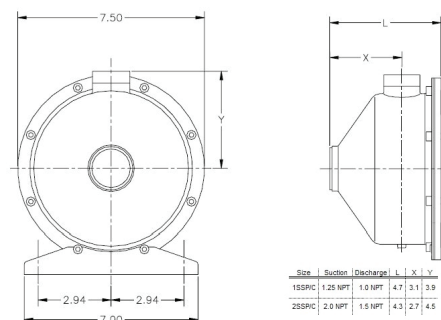
Applications

- Dishmachines
- Chillers
- Breweries
- Parts Washers
- Water Circulation
- Filtration Systems
- Commercial Laundry
- Booster Systems

CENTRIFUGAL PUMPS

SSP and SSPC Centrifugal Pumps

- Flow Rates to 250-gpm and Heads to 127 feet
- System pressures up to 125 psig
- SSP/C1 nozzles: 1-1/4" x 1" NPT Suction & Discharge
- SSP/C2 nozzles: 2" x 1.5" NPT Suction & Discharge
- 3A connections available
- Open or Enclosed Impeller Designs
- All Stainless Steel Construction
- 1/2 through 5.0 horsepower motors
- Service in both 50 and 60-Hz
- Stainless steel base or footed motor mounting options
- Multiple mechanical seal materials available to suit application



SPV Vertical Pump



Vertically mounted pump for use with a sump

- Sealless pump for clean liquids
- Mounting Clamps and Sump Covers available
- 12" and 24" sump depths standard
- Extended shaft or cantilever shaft options available

No mechanical seal or packing required!

Same performance curves as the SSP horizontal pump



HIGH PRESSURE CENTRIFUGAL PUMPS

7SP Centrifugal Pumps

- Single stage high pressure pump produces up to 88 psig
- Flow Rates up to 70gpm
- System pressures up to 120 psig
- Temperatures up to 250°F
- Service in both 50 and 60Hz
- 56J Frame: 2 through 5HP motors available
- 1.0" x 1.25" NPT Connections
- Multiple mechanical seal configurations



TSP Two Stage Pumps



- Two stage high pressure pump produces up to 115 psig
- Flow Rates up to 63gpm
- System pressures up to 120 psig
- Temperatures up to 250°F
- Service in both 50 and 60Hz
- 56J Frame: 2 through 5HP motors available
- 1.0" x 1.25" NPT Connections
- Multiple mechanical seal configurations

FSP & FDP COMPACT CENTRIFUGAL PUMPS



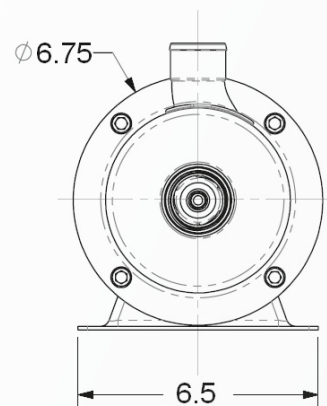
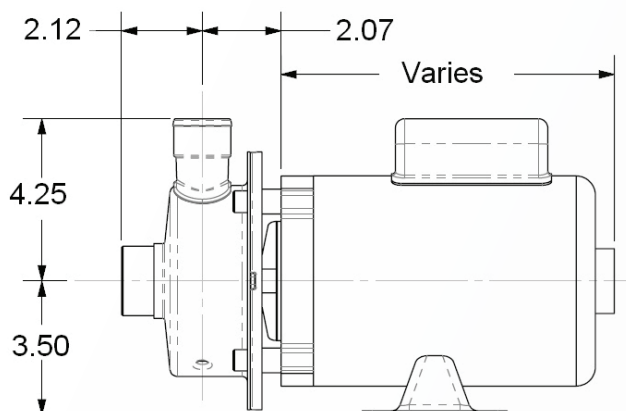
- Flow Rates up to 70gpm
- System pressures up to 50 psig
- Temperatures up to 250°F
- Impellers produce up to 29.5psig
- Our smallest and most economical pump

Options

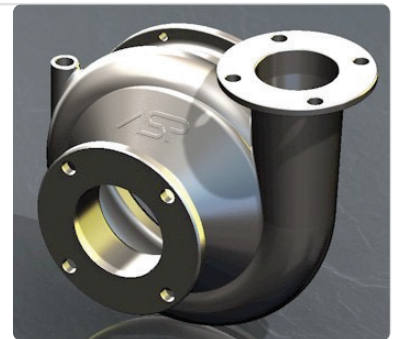
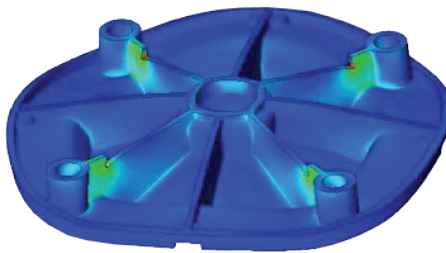
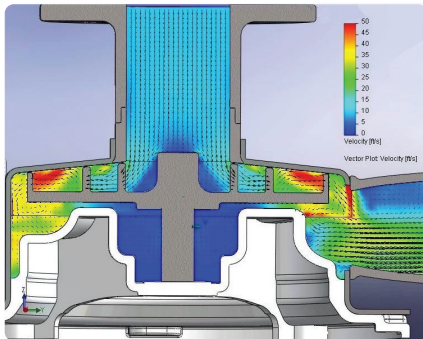
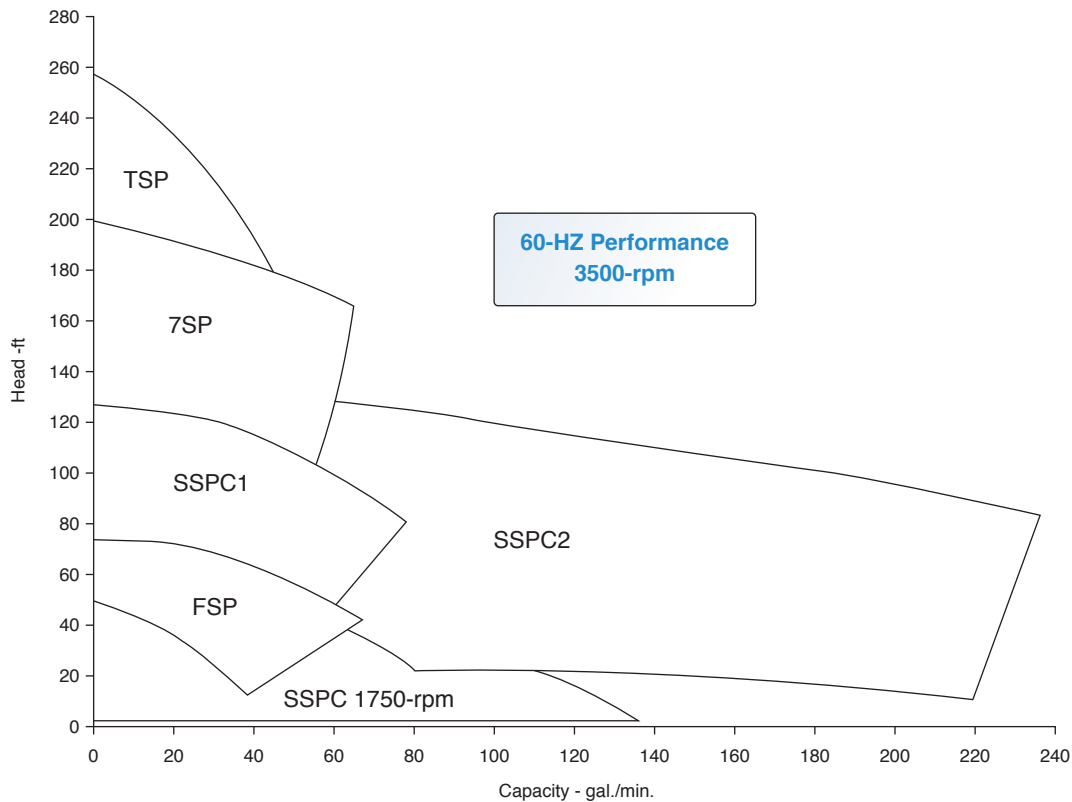
- Seal material upgrades
- Mounting bases
- Custom Features and nozzles available!

Customize your nozzles for OEM applications!!!

Diagram



FAMILY OF CURVES



ASP engineering takes advantage of the latest CFD and FEA analysis software to ensure our products' design quality and efficiency.

Custom pumps and nozzles for OEM applications



1150 E. Dominguez St. Carson, CA 90746
Phone (310) 630-8089 | Fax (310) 630-8095
Email: support@aspumps.com