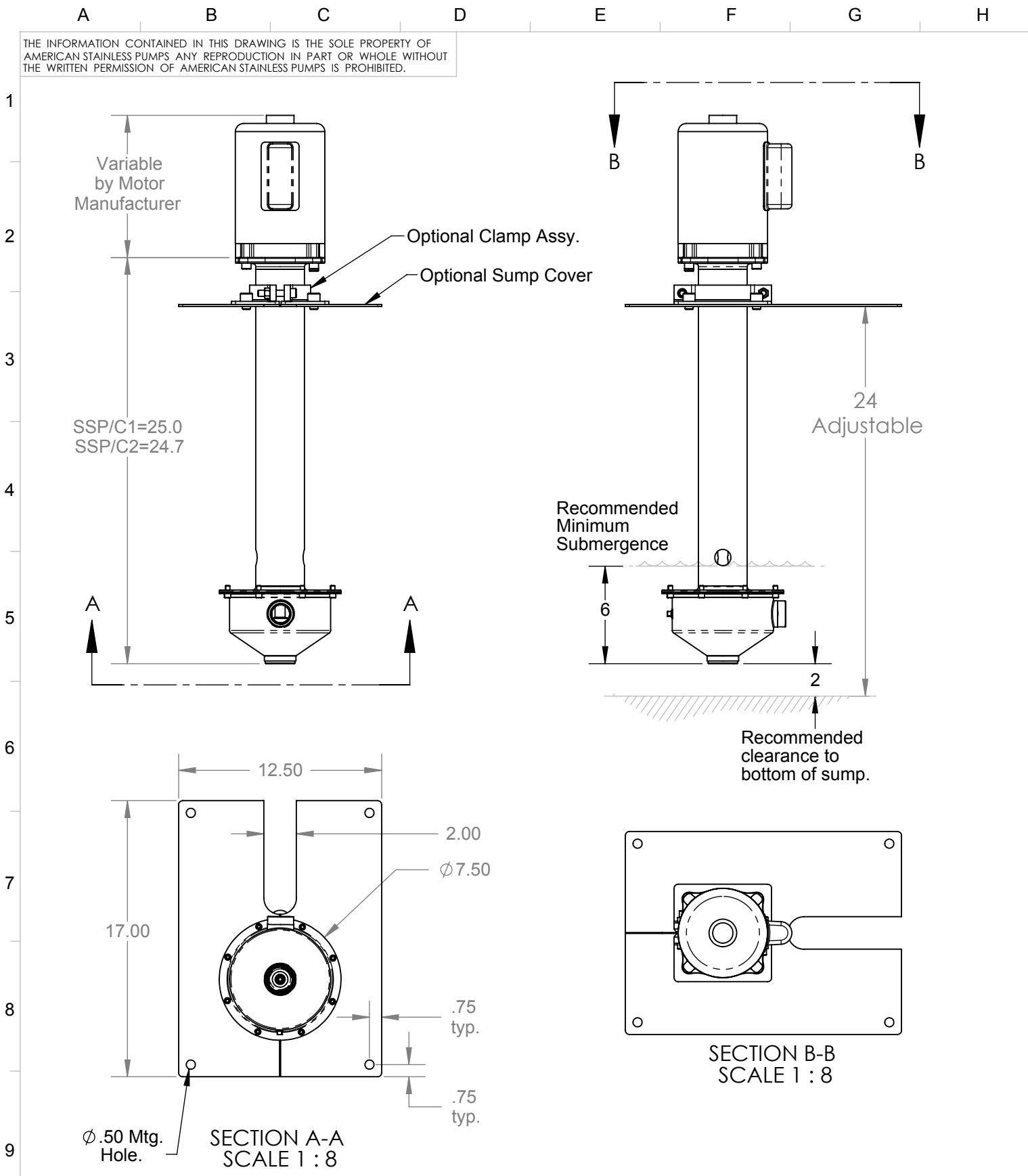


THE INFORMATION CONTAINED IN THIS DRAWING IS THE SOLE PROPERTY OF AMERICAN STAINLESS PUMPS ANY REPRODUCTION IN PART OR WHOLE WITHOUT THE WRITTEN PERMISSION OF AMERICAN STAINLESS PUMPS IS PROHIBITED.

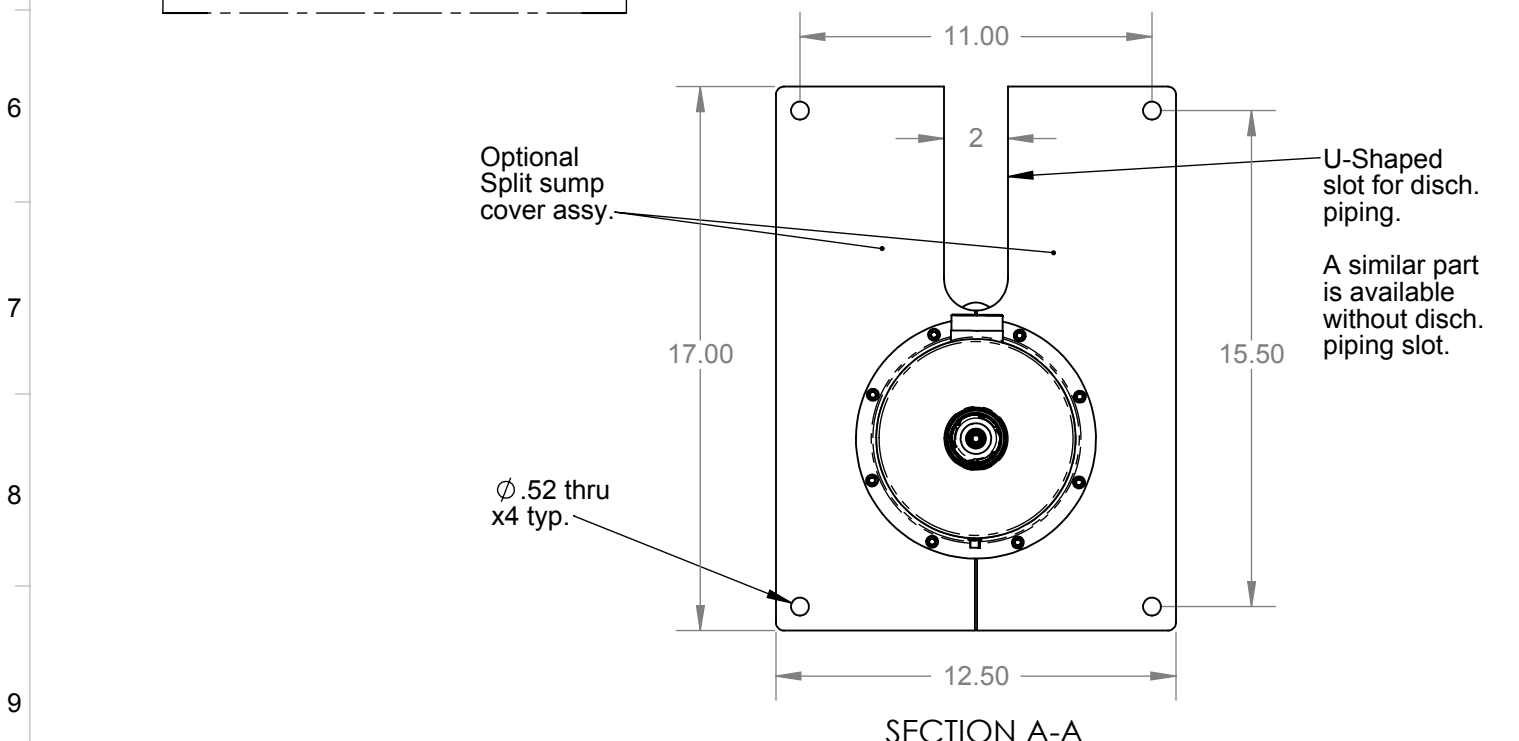
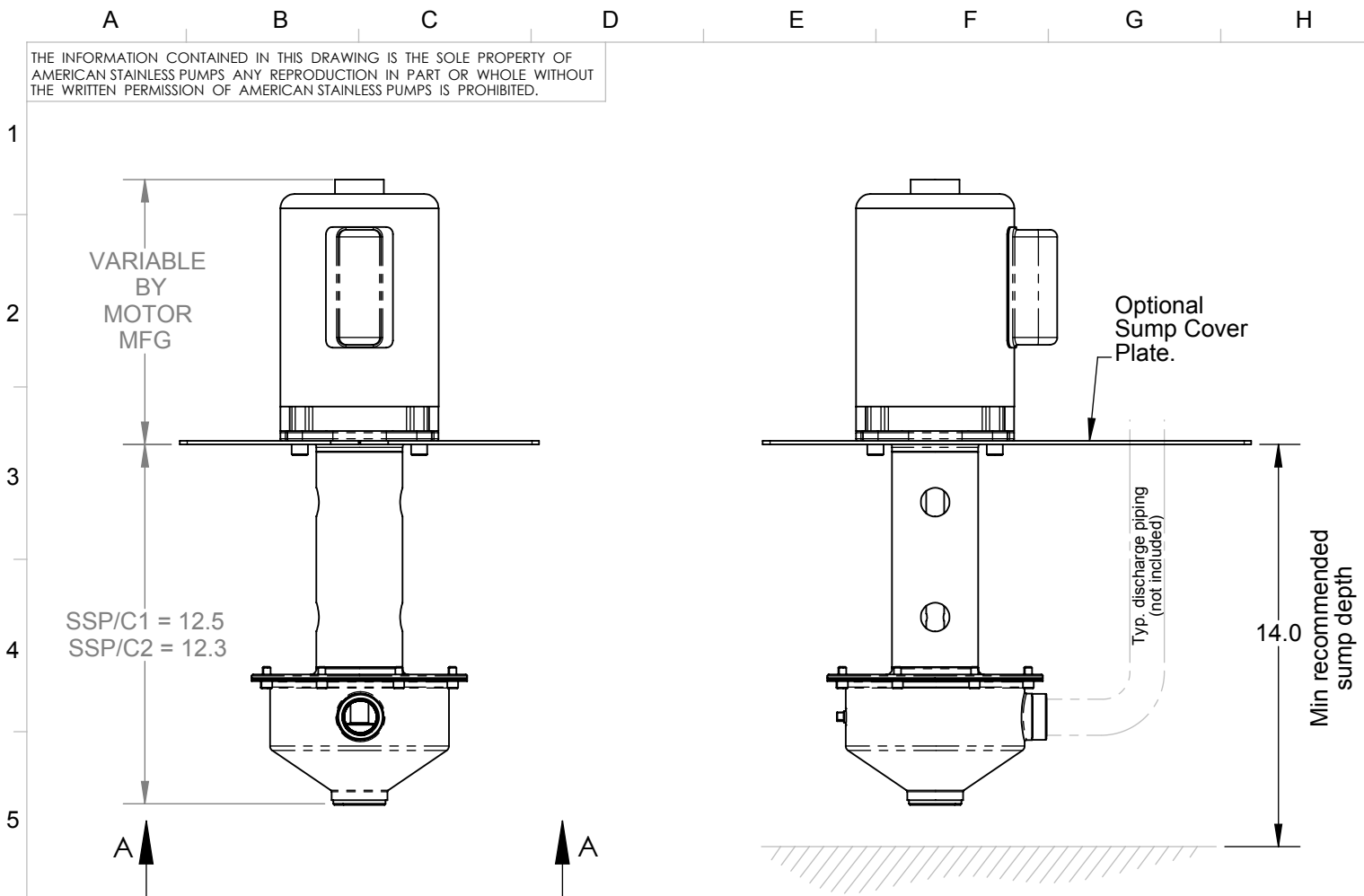


0	ORIGINAL DOCUMENT	DATE
REV.	REVISION DESCRIPTION	DATE
<p>WHEN NOT NOTED OTHERWISE</p> <p>ALL DIMENSIONS IN INCHES. REMOVE ALL BURRS. RADIAL & DIAMETRICAL DIMENSIONS ARE TO BE HELD TO A ±.002 SYMMETRICAL TOLERANCE, AND ARE CONCENTRIC WITH PART CENTERLINES.</p> <p>CHAMFER MACHINED EDGES 0.03. FILLET CORNERS 0.06 MACHINED FACES SURFACE FINISH 63. QUESTIONS? CALL 310-630-8089. EMAIL: MCOOL@ASPUMPS.COM</p>		

RELEASED FOR CONSTRUCTION?	YES
TOLERANCES UNLESS OTHERWISE INDICATED	
FRACTIONS	DECIMAL
1/X ± 1/32	.X ± 0.015
1/XX ± 1/64	.XX ± 0.01
	.XXX ± 0.005
	.XXXX ± 0.001
ANGULAR	
	X ± .5°
	.X ± .1°
	.XX ± .02°

MATERIAL:	Stainless Steel
MANUFACTURING PROCESS:	
CAD GENERATED DRAWING NOT FOR CONSTRUCTION UNLESS INDICATED. DO NOT SCALE DRAWING.	
ASP AMERICAN STAINLESS PUMPS LOS ANGELES, CALIFORNIA	
PART NO.	SHEET NAME:
	24" Setting With Clamp Mounted Sump Cover
DRAWN BY: MWC	FILE NAME:
CHECKED BY: MFB	SPV Outline Drawings
RELEASED BY: BOTH	
SHEET: A	SCALE: 1:1
PATH:	
REV. 2	DATE 2/22/10
SHEET 1 OF 3	

THE INFORMATION CONTAINED IN THIS DRAWING IS THE SOLE PROPERTY OF AMERICAN STAINLESS PUMPS ANY REPRODUCTION IN PART OR WHOLE WITHOUT THE WRITTEN PERMISSION OF AMERICAN STAINLESS PUMPS IS PROHIBITED.



0 ORIGINAL DOCUMENT		DATE	MATERIAL: Stainless Steel		MANUFACTURING PROCESS:																	
REV.	REVISION DESCRIPTION	DATE	RELEASED FOR CONSTRUCTION? YES	CAD GENERATED DRAWING NOT FOR CONSTRUCTION UNLESS INDICATED. DO NOT SCALE DRAWING.																		
WHEN NOT NOTED OTHERWISE ALL DIMENSIONS IN INCHES. REMOVE ALL BURRS. RADIAL & DIAMETRICAL DIMENSIONS ARE TO BE HELD TO A ±.002 SYMMETRICAL TOLERANCE, AND ARE CONCENTRIC WITH PART CENTERLINES.			TOLERANCES UNLESS OTHERWISE INDICATED <table border="1"> <thead> <tr> <th>FRACTIONS</th> <th>DECIMAL</th> <th>ANGULAR</th> </tr> </thead> <tbody> <tr> <td>1/X ± 1/32</td> <td>.X ± 0.015</td> <td>X ± .5°</td> </tr> <tr> <td>1/XX ± 0.01</td> <td>.XX ± 0.01</td> <td>.X ± .1°</td> </tr> <tr> <td>1/XXX ± 0.005</td> <td>.XXX ± 0.005</td> <td>.XX ± .02°</td> </tr> <tr> <td>1/XXXX ± 0.001</td> <td>.XXXX ± 0.001</td> <td></td> </tr> </tbody> </table>			FRACTIONS	DECIMAL	ANGULAR	1/X ± 1/32	.X ± 0.015	X ± .5°	1/XX ± 0.01	.XX ± 0.01	.X ± .1°	1/XXX ± 0.005	.XXX ± 0.005	.XX ± .02°	1/XXXX ± 0.001	.XXXX ± 0.001		AMERICAN STAINLESS PUMPS LOS ANGELES, CALIFORNIA	
FRACTIONS	DECIMAL	ANGULAR																				
1/X ± 1/32	.X ± 0.015	X ± .5°																				
1/XX ± 0.01	.XX ± 0.01	.X ± .1°																				
1/XXX ± 0.005	.XXX ± 0.005	.XX ± .02°																				
1/XXXX ± 0.001	.XXXX ± 0.001																					
SECTION A-A			PART NO. SHEET NAME: 12" Setting with Motor Mounted Sump Cover		DRAWN BY: MWC CHECKED BY: MFB RELEASED BY: BOTH SHEET: A SCALE: 1/6 PATH:																	
CHAMFER MACHINED EDGES 0.03. FILLET CORNERS 0.06 MACHINED FACES SURFACE FINISH 63. QUESTIONS? CALL 310-630-8089. EMAIL: MCOOL@ASPUMPS.COM			FILE NAME: SPV Outline Drawings		REV. 2 DATE 2/22/10 SHEET 2 OF 3																	

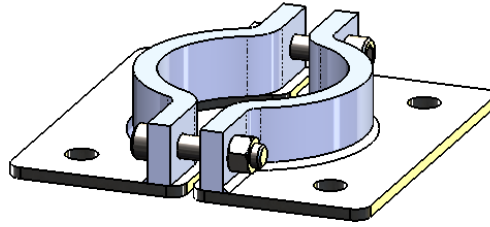
THE INFORMATION CONTAINED IN THIS DRAWING IS THE SOLE PROPERTY OF AMERICAN STAINLESS PUMPS ANY REPRODUCTION IN PART OR WHOLE WITHOUT THE WRITTEN PERMISSION OF AMERICAN STAINLESS PUMPS IS PROHIBITED.

SPV Mounting Accessories

Clamp Assembly. p/n: 811010

The SPV clamp assembly is used to position the SPV pump assembly exactly where you need it, with respect to your sump depth and piping configurations.

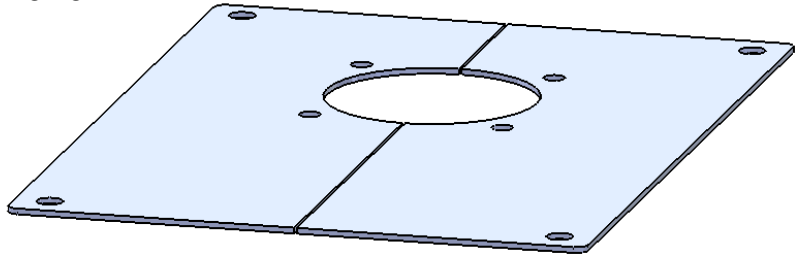
This clamp assembly can be used with the sump covers shown below, or with your own custom designs.



Sump Cover Assembly. p/n: 811010

The SPV sump cover assembly can be used in conjunction either with the clamp assembly above, or mounted directly to the motor adaptor on the SPV column assembly.

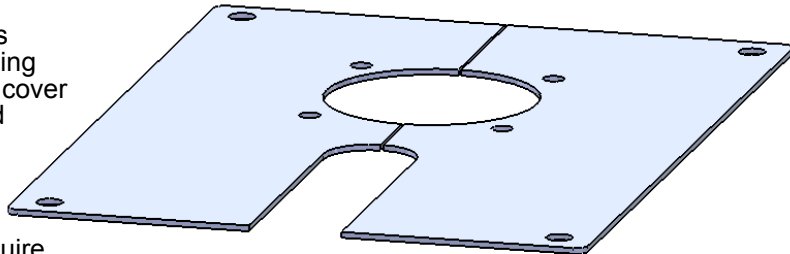
Custom sized available. Please inquire to factory.



Sump Cover Assembly with U-Slot. p/n: 810011

This SPV sump cover assembly has a U-Slot to allow your discharge piping to exit the sump. As with the sump cover above, the cover can be either used with the clamp assembly, or simply bolted to the pump column motor adaptor.

Custom sizes available. Please inquire.



0	ORIGINAL DOCUMENT	DATE
REV.	REVISION DESCRIPTION	DATE

MATERIAL: **Stainless Steel**
MANUFACTURING PROCESS:

CAD GENERATED DRAWING
NOT FOR CONSTRUCTION
UNLESS INDICATED.
DO NOT SCALE DRAWING.



AMERICAN STAINLESS PUMPS
LOS ANGELES, CALIFORNIA

PART NO. SHEET NAME:
Mounting Accessories

DRAWN BY: MWC
CHECKED BY: MFB
RELEASED BY: BOTH
SHEET: A

FILE NAME:
SPV Outline Drawings
SCALE: 1:6

PATH:

REV. **2** DATE **2/22/10**

SHEET 3 OF 3

WHEN NOT NOTED OTHERWISE

ALL DIMENSIONS IN INCHES.
REMOVE ALL BURRS.
RADIAL & DIAMETRICAL DIMENSIONS ARE TO BE HELD TO A ±.002
SYMMETRICAL TOLERANCE, AND ARE CONCENTRIC WITH PART CENTERLINES.

CHAMFER MACHINED EDGES 0.03.
FILLET CORNERS 0.06
MACHINED FACES SURFACE FINISH 63.
QUESTIONS? CALL 310-630-8089.
EMAIL: MCOOL@ASPUMPS.COM

TOLERANCES UNLESS OTHERWISE INDICATED

FRACTIONS	DECIMAL	ANGULAR
1/X ± 1/32	.X ± 0.015	X ± .5°
1/XX ± 1/64	.XX ± 0.01	.X ± .1°
	.XXX ± 0.005	.XX ± .02°
	.XXXX ± 0.001	