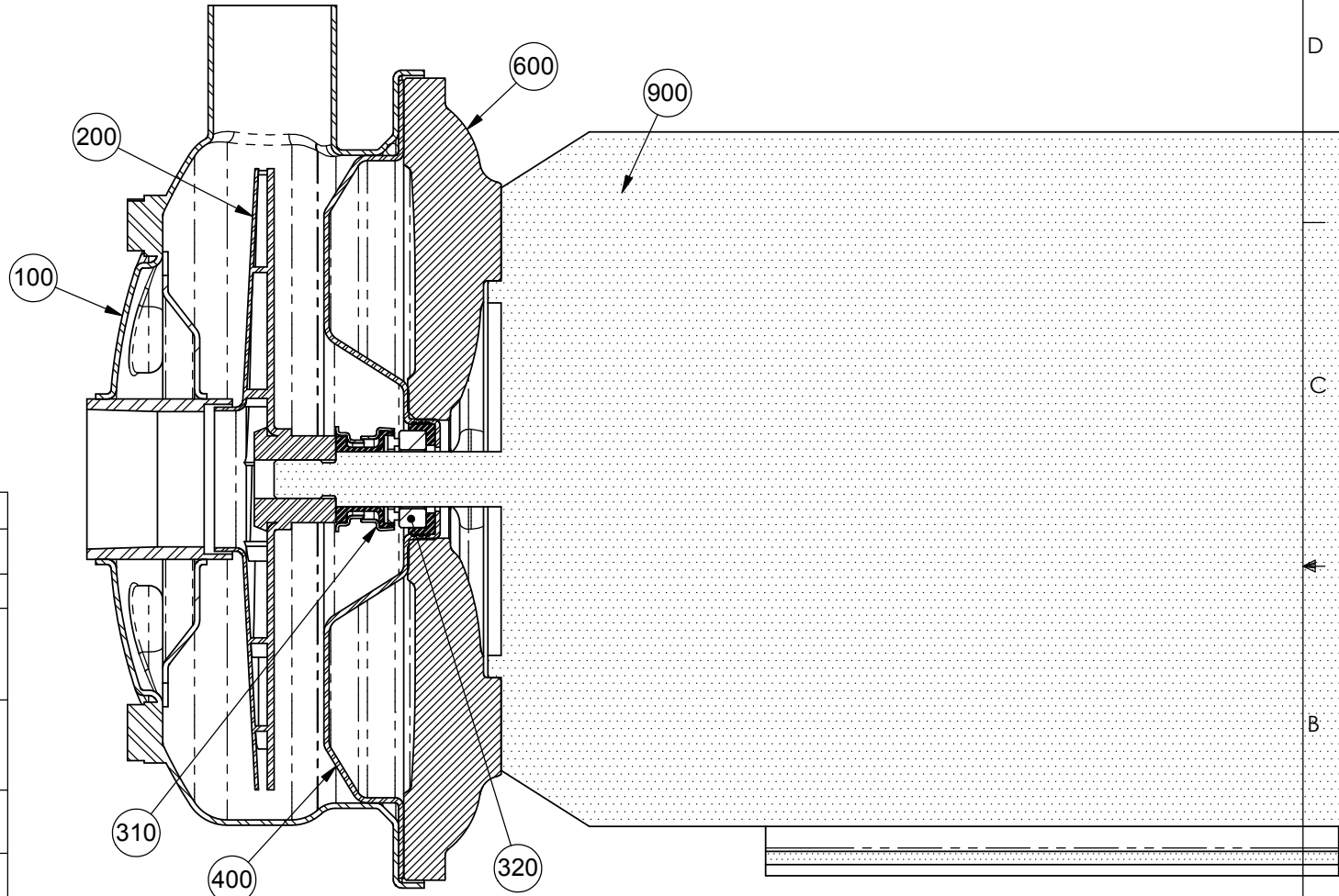
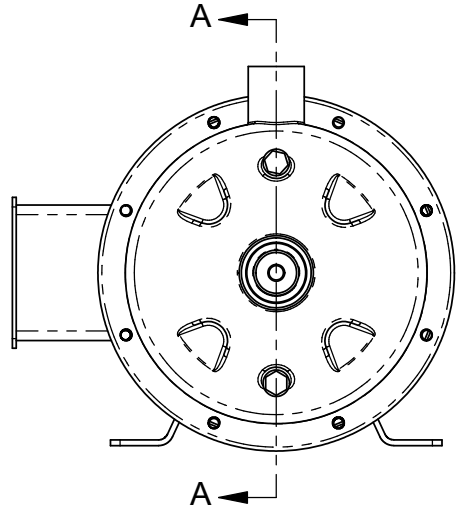


THE INFORMATION CONTAINED IN THIS DRAWING IS THE SOLE PROPERTY OF AMERICAN STAINLESS PUMPS ANY REPRODUCTION IN PART OR WHOLE WITHOUT THE WRITTEN PERMISSION OF AMERICAN STAINLESS PUMPS IS PROHIBITED.



Item #	Description
100	7" Pump Casing
200	7" Enclosed Impeller
310	Mechanical Seal rotating element for 5/8" diameter shaft.
320	Mechanical Seal Seat 1.25-inch outer diameter
400	7" Sealplate
600	Cast Iron Motor Adapter
900	NEMA 56J Frame motor

SECTION A-A  
SCALE 1 : 2

MATERIAL: 304 Stainless Steel Wetted Parts  
MANUFACTURING PROCESS: Process

CAD GENERATED DRAWING NOT FOR CONSTRUCTION UNLESS INDICATED. DO NOT SCALE DRAWING.  
**ASP** AMERICAN STAINLESS PUMPS  
LOS ANGELES, CALIFORNIA

RELEASED FOR CONSTRUCTION? **YES**

TOLERANCES UNLESS OTHERWISE INDICATED

FRACTIONS	DECIMAL	ANGULAR
1/X ± 1/32	.X ± 0.015	X ± .5 °
1/XX ± 1/64	.XX ± 0.01	.X ± .1 °
	.XXX ± 0.005	.XX ± .02 °
	.XXXX ± 0.001	

PART NO: **7SP** SHEET NAME: **Cross Sectional Drawing**  
DRAWN BY: MWC FILE NAME: **7SP Cross Sectional Drawing**  
CHECKED BY: MFB  
RELEASED BY: BOTH  
REV: **0** DATE: **4/10/07**  
SHEET: A SCALE: 3:4 PATH: SHEET 1 OF 1

**WHEN NOT NOTED OTHERWISE**  
ALL DIMENSIONS IN INCHES. CHAMFER MACHINED EDGES 0.03. REMOVE ALL BURRS. FILLET CORNERS 0.06. RADIAL & DIAMETRICAL DIMENSIONS MACHINED FACES SURFACE FINISH 63. ARE TO BE HELD TO A ±.002. QUESTIONS? CALL 310-630-8089. SYMMETRICAL TOLERANCE, AND ARE EMAIL: MCOOL@ASPUMPS.COM CONCENTRIC WITH PART CENTERLINES.

REV.	REVISION DESCRIPTION	DATE
0	ORIGINAL DOCUMENT	7/16/07