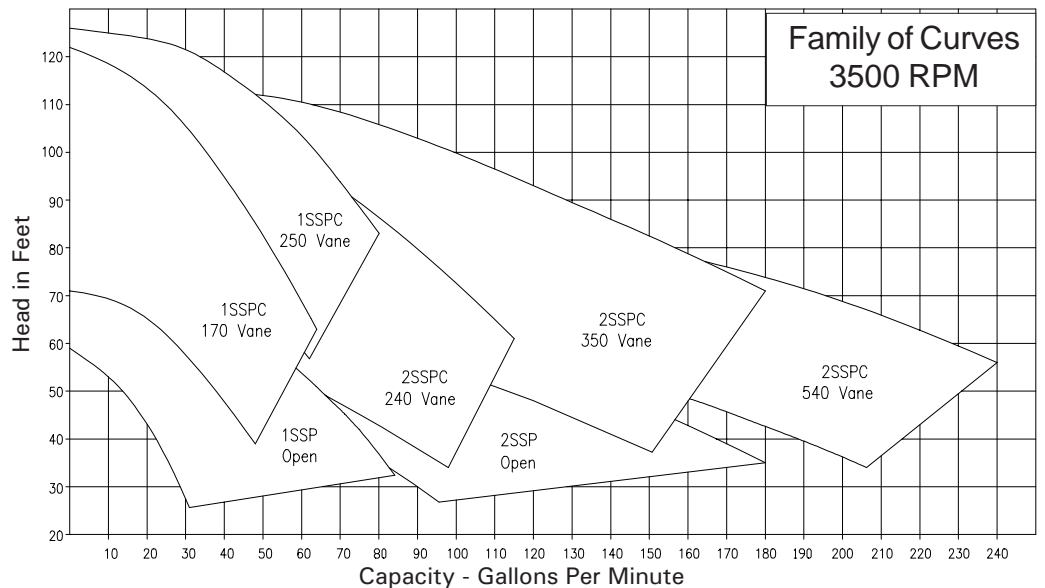
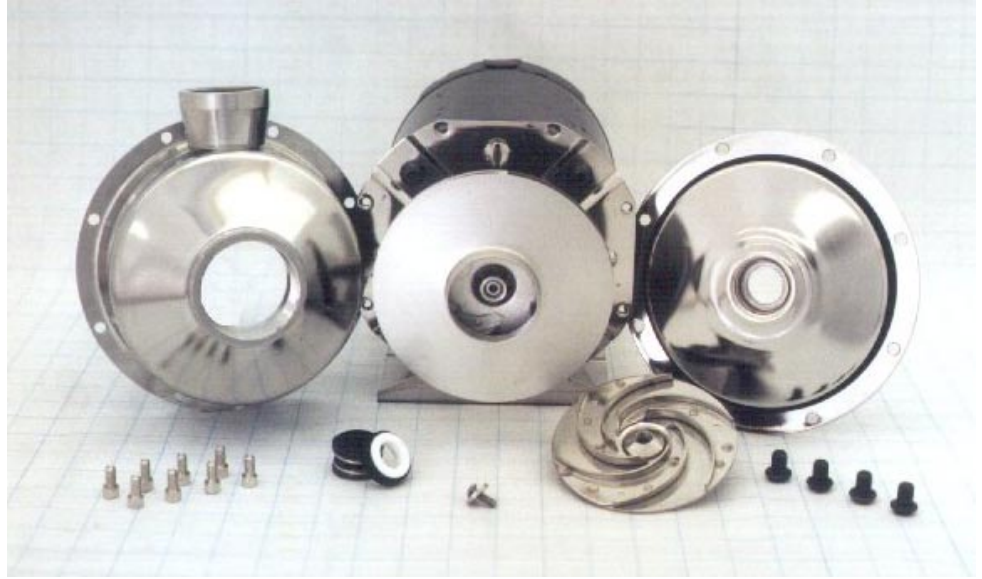


AMERICAN STAINLESS PUMPS

Stainless Steel Pumps for the Commercial Marketplace

SSP

- Stainless Steel
- Open or Enclosed Impellers
- End Suction
- Back Pullout
- Close Coupled
- High Efficiency



Applications

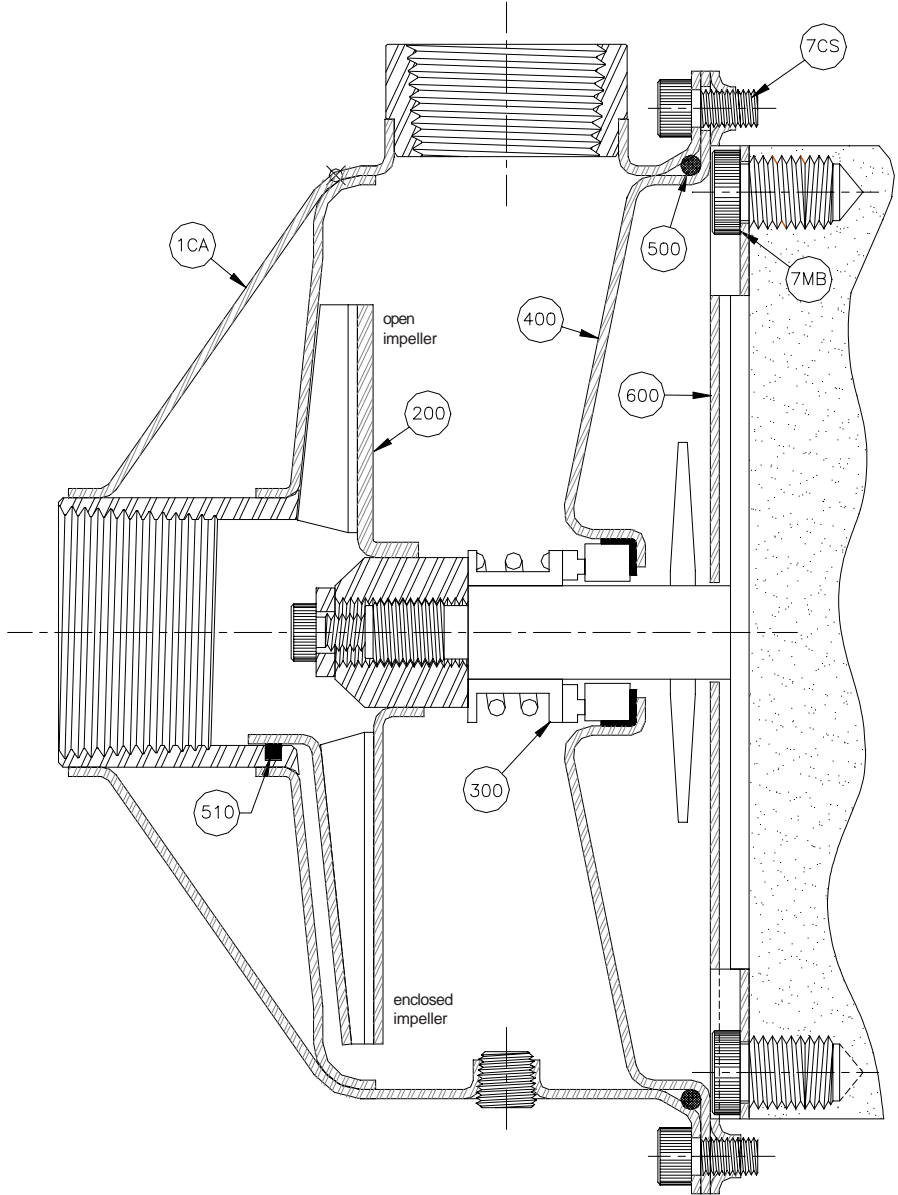
- Dishwashing Machines
- Commercial Laundry
- Parts Washers
- Pure Water Transfers
- Chillers
- Refrigeration Circulators
- Machine Tool Coolant
- Bottling Operations
- Water Circulation
- Mold Cooling
- Filtration Systems



www.aspumps.com

Pump Description

- All Stainless Steel wetted parts.
- Horizontal or vertical mounting.
- 56J Frame NEMA motors
- 1/2 HP to 5 HP
- ODP, TEFC, & Exp. Encl. available
- Capacities to 240 GPM
- Differential pressures to 54 psig
- Temperatures to 250°F
- Open impeller for solids handling, or enclosed impellers for higher heads and efficiencies
- Impeller locking screw available
- NPT threaded connections
- Casing rotates for easy connections
- Special Mechanical Seals available

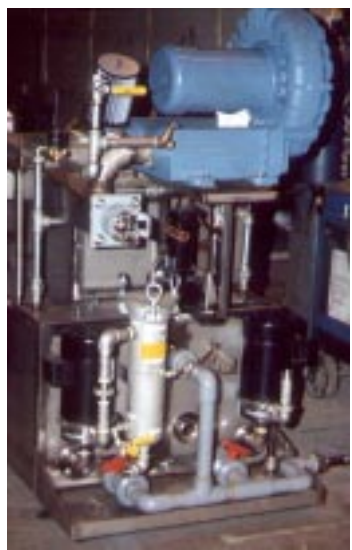


Standard Materials of Construction

Item No.	Description	Material
100	Casing	304SS
200	Impeller	304SS
300	Mechanical Seal	As Required
400	Seal Plate	304SS
500	Case O-Ring	As Required
600	Motor Adaptor Plate	304SS
7CS	Case Screw	Nickel Plated Steel
7MB	Motor Bolt	Nickel Plated Steel
8PB	Pump Base	304SS



Chiller Applications



Parts Washers



Dish Machines

AMERICAN STAINLESS PUMPS

14032 South Avalon Blvd., #C. Los Angeles, CA. 90061
 Phone (310) 630-8089 ~ Fax: (310) 630-8095