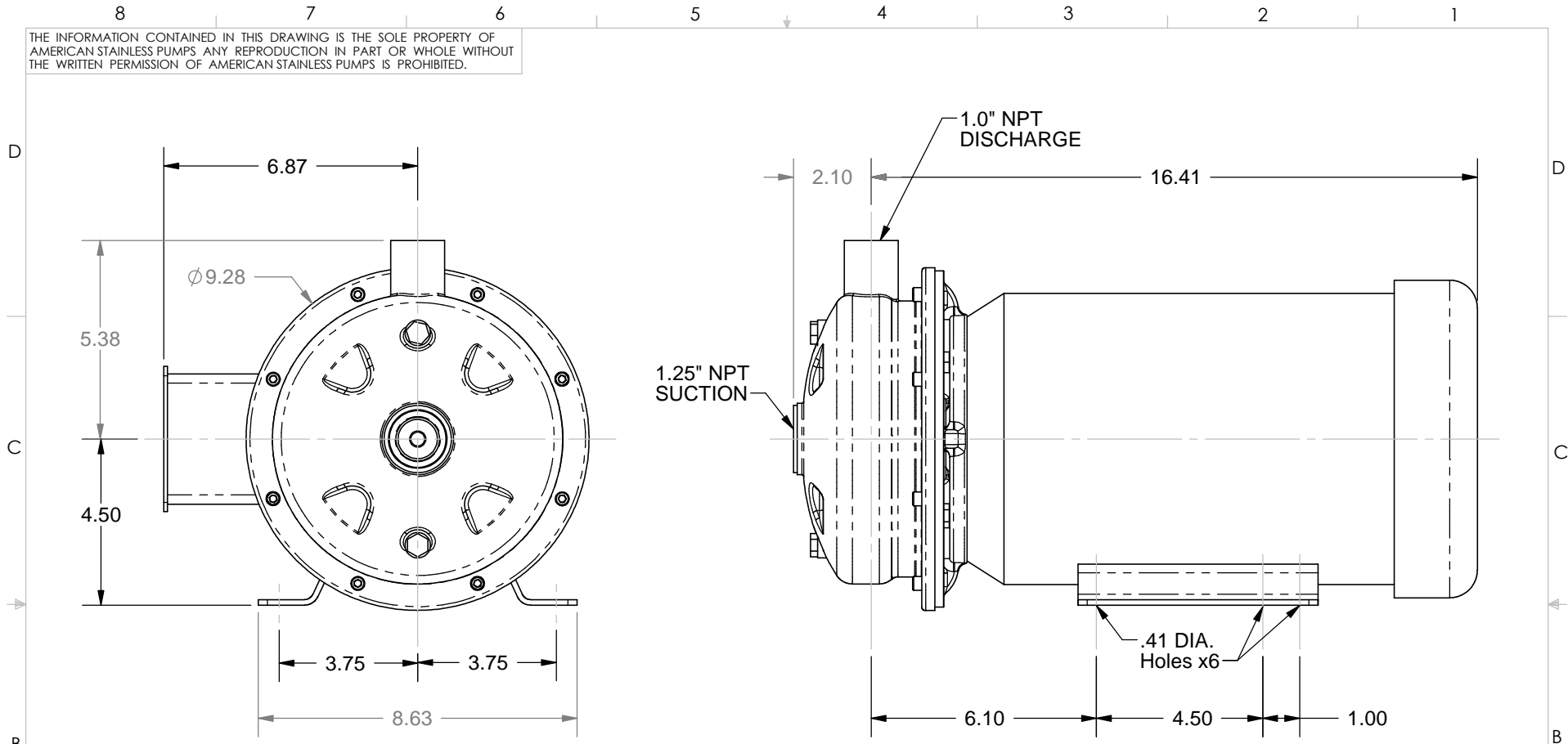


THE INFORMATION CONTAINED IN THIS DRAWING IS THE SOLE PROPERTY OF AMERICAN STAINLESS PUMPS. ANY REPRODUCTION IN PART OR WHOLE WITHOUT THE WRITTEN PERMISSION OF AMERICAN STAINLESS PUMPS IS PROHIBITED.



REV.	REVISION DESCRIPTION	DATE
0	ORIGINAL DOCUMENT	

WHEN NOT NOTED OTHERWISE

ALL DIMENSIONS IN INCHES.
 REMOVE ALL BURRS.
 RADIAL & DIAMETRICAL DIMENSIONS ARE TO BE HELD TO A ± 0.002
 SYMMETRICAL TOLERANCE, AND ARE CONCENTRIC WITH PART CENTERLINES.

CHAMFER MACHINED EDGES 0.03.
 FILLET CORNERS 0.06
 MACHINED FACES SURFACE FINISH 63.
 QUESTIONS? CALL 310-630-8089.
 EMAIL: MCOOL@ASPUMPS.COM

RELEASED FOR CONSTRUCTION?	YES	
TOLERANCES UNLESS OTHERWISE INDICATED		
FRACTIONS	DECIMAL	ANGULAR
1/X \pm 1/32	.X \pm 0.015	X \pm .5°
1/XX \pm 1/64	.XX \pm 0.01	.X \pm .1°
	.XXX \pm 0.005	.XX \pm .02°
	.XXXX \pm 0.001	

MATERIAL: Material
 MANUFACTURING PROCESS: Process

ASP AMERICAN STAINLESS PUMPS
 LOS ANGELES, CALIFORNIA

PART NO: Part No
 SHEET NAME: 5T3F Outline Drawing

DRAWN BY: MWC
 CHECKED BY: MFB
 RELEASED BY: BOTH
 SHEET: A

FILE NAME: M187 5T3F Outline
 SCALE: 4:14

REV. 0
 DATE 5/21/07

SHEET 1 OF 1