



SSP & SSPC Product Description

The models SSP and SSPC are similar pumps. The model SSP is the open-impeller version, and the model SSPC is the enclosed-impeller version of the same pump. The dimensions of both pumps are identical. The SSP(C) is a single-stage, close-coupled, back-pullout centrifugal pump, fabricated of 304 stainless steel.

The SSP(C) was designed primarily for the commercial OEM marketplace. Our goal was to provide a new pumping alternative that met the following conditions:

Lower Cost

The model SSP(C) is priced lower than any other comparable stainless steel pump on the market. In fact, in most cases the SSP(C) is less expensive than similar cast iron or plastic pumps.

Durability

The SSP(C) was designed to provide long lasting service. The stainless steel materials of construction, heavy-duty nozzles and impellers, rigid case design, and large mechanical seal selection assure a long pump life.

Versatility

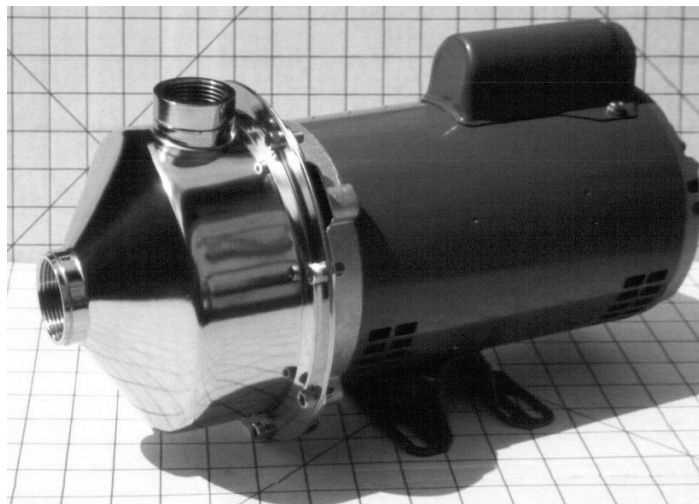
We wanted the SSP(C) to be able to perform well in a variety of applications; and we knew that our customers all had different requirements. That's why we designed our pump to be easily modified or customized, to fit each application's essentials. We have over 50 different impeller designs, and can mount our pump in almost any configuration.

High Efficiency

The SSP(C) is often times, more efficient than the competition's pumps. This is attributable to the smooth surface finishes provided by stainless steel sheet, and our computer aided impeller and casing designs. In many cases, an SSP can be installed with a lower horsepower motor than your previous pump.

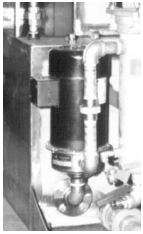
Better Looking

Judge for yourself. We think the SSP is the best looking pump on the market. If you're using someone else's rusty cast iron pump, or one of our competitor's bulky stainless pumps, the SSP(C) will definitely be an upgrade.





The models SSP & SSPC offer the following features and benefits when compared with other similarly formed stainless steel centrifugal pumps.



The SSP outer case is a one-piece shell, capable for supporting the pump and motor weight in a vertically mounted position. Many of our competitors formed cases cannot be mounted on the suction nozzle and must use the motor as a support, or have a special mounting base. Our internal design also prevents any air from being trapped in the pump case when mounted vertically, something our competitors cannot say.

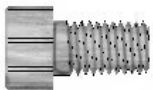


The suction and discharge nozzles on the SSP & SSPC are machined from stainless pipe, and have an extra heavy wall thickness. These nozzles cannot be easily damaged in shipment or during installation, as can the nozzles of our competitors' pumps.



Impellers on pumps supplied with 3-phase motors of 1.5-hp or larger, come as standard with a left-hand thread locking screw. This screw prevents the impeller from backing off the motor shaft at start up, if the motor is started in reverse rotation. Our competitors do not have a positive locking mechanism on their equivalent pump, and damaged impellers, cases and motors are often the victims of a reverse rotation start.

The SSP & SSPC do not have a volute design casing, which can put a radial load on the motor bearing; and no diffuser to plug up, wear out, or replace. The unique case/impeller design acts as a vaneless diffuser, to convert velocity to pressure. This results in higher efficiencies, lower horsepower, and increased reliability.



The case bolts on the SSP & SSPC are American National, not metric screws like so many of our competitors use in their pumps.



The SSP & SSPC come as standard with an inexpensive Type 6, carbon v. ceramic, with Buna N elastomers, mechanical seal. This seal is easy to install and replace, can be purchased at any seal supply store, and is relatively inexpensive. We also offer upgraded type 21 seals, with viton or EPR elastomers, and silicon carbide faces as options. Our competitors use a very expensive, non-standard seal as their standard seal, and charge to change to a less expensive seal.

The SSP & SSPC are priced to beat the competition, without the onerous stocking and purchasing conditions set by our competitors. For volume users, the models SSP & SSPC can be customized in many ways, to better fit our customer's requirements. We offer two day shipments on standard product orders, and just in time deliveries for our blanket order customers.